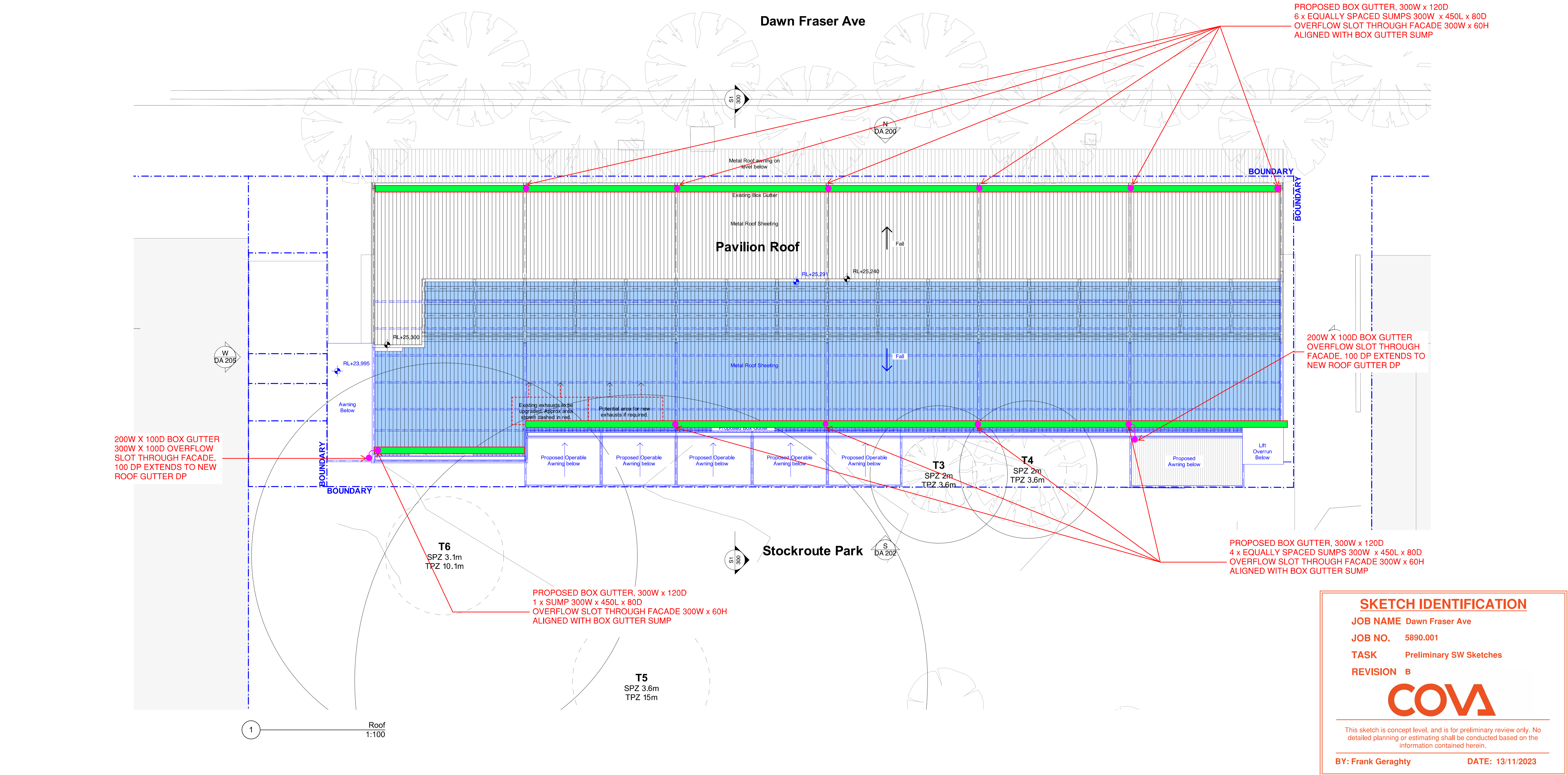


<div>General Notes</div> <div>DO NOT SCALE FROM DRAWING. USE FIGURED DIMENSIONS ONLY. CHECK ALL DIMENSIONS ON SITE BEFORE ANY MANUFACTURE OR CONSTRUCTION</div> <div>All dimensions are in millimetres unless stated otherwise.</div> <div>All architectural drawings are to be read in conjunction with the relevant consultant documents. All dimensions and levels are to be checked and verified on site prior to the commencement of work, shop drawings or fabrication of any components. Refer all discrepancies to the Architect for determination. Drawings are not to be scaled, use only figured dimensions. This drawing is copyright and must not be retained, copied or used without the permission of BKA Architecture. This document has been prepared for and on behalf of the clients noted on the drawing. BKA Architecture's responsibility is to these clients only and not to any third party who may rely on these documents.</div> <div>Nominated Architects (NSW) - John Baker 3552</div>	<div>LEGEND</div> <div><div><div></div>Existing</div><div><div></div>To be demolished</div><div><div></div>Proposed</div></div>	<div><div>Rev</div><div>Date</div><div>Issue</div></div> <div><div>A</div><div>7/8/2023</div><div>Issue for Owner's Consent</div></div> <div>Final Issue to Consultants</div> <div>27/10/2023</div>	<div>Client</div> <div>Gary Carli</div>	<div>Architect</div> <div>BKA Architecture</div> <div><div><div>SYDNEY</div><div>Suite 1.04, 77 Dunning Ave, Rosebery, NSW 2018</div></div><div><div>NEWCASTLE</div><div>Suite 4, 19 Bilton St, Newcastle NSW 2300</div></div><div><div>NORTH COAST</div><div>39-41 Main St, Clunes, NSW 2480</div></div></div> <div><div>T: +61 2 9318 9200</div><div>E: bka@bka.com.au</div><div>W: www.bka.com.au</div></div> <div><div>T: +61 2 4926 5563</div><div>T: +61 2 6687 2712</div></div>	<div><div>Scale at A1</div><div>1:100</div></div> <div><div>Date</div><div>27/10/2023</div></div> <div><div>North</div><div><div></div></div></div> <div><div>Drawn</div><div>AT</div></div>	<div><div>Project Address</div><div>8 Dawn Fraser Ave, Olympic Park</div></div> <div><div>Checked</div><div>Status</div></div> <div><div>JK</div><div>Not for Construction</div></div>	<div><div>Drawing</div><div>Level 1 Floor Plan</div></div> <div><div>Project No.</div><div>Revision</div><div>Drawing No.</div></div> <div><div>23009</div><div>A</div><div>DA 101</div></div>
--	---	---	---	--	--	--	--



<div>General Notes</div> <div>DO NOT SCALE FROM DRAWING. USE FIGURED DIMENSIONS ONLY. CHECK ALL DIMENSIONS ON SITE BEFORE ANY MANUFACTURE OR CONSTRUCTION</div> <div>All dimensions are in millimetres unless stated otherwise.</div> <div>All architectural drawings are to be read in conjunction with the relevant consultant documents. All dimensions and levels are to be checked and verified on site prior to the commencement of work, shop drawings or fabrication of any components. Refer all discrepancies to the Architect for determination. Drawings are not to be scaled, use only figured dimensions. This drawing is copyright and must not be retained, copied or used without the permission of BKA Architecture. This document has been prepared for and on behalf of the clients noted on the drawing. BKA Architecture's responsibility is to these clients only and not to any third party who may rely on these documents.</div> <div>Nominated Architects (NSW) - John Baker 3552</div>	<div>LEGEND</div> <div><div><div></div>Existing</div><div><div></div>To be demolished</div><div><div></div>Proposed</div></div>	<div><div>Rev</div><div>A</div><div>Date</div><div>7/8/2023</div><div>Issue</div><div>Issue for Owner's Consent</div></div> <div>Final Issue to Consultants</div> <div>27/10/2023</div>	<div>Client</div> <div>Gary Carli</div>	<div>Architect</div> <div>BKA Architecture</div> <div><div>SYDNEY</div><div>Suite 1.04,</div><div>77 Dunning Ave,</div><div>Rosebery,</div><div>NSW 2018</div><div>T: +61 2 93 18 9200</div><div>E: bka@bka.com.au</div><div>W: www.bka.com.au</div></div> <div><div>NEWCASTLE</div><div>Suite 4</div><div>19 Bolton St,</div><div>Newcastle</div><div>NSW 2300</div><div>T: +61 2 4926 5563</div></div> <div><div>NORTH COAST</div><div>39-41 Main St,</div><div>Clunes,</div><div>NSW 2480</div><div>T: +61 2 6687 2712</div></div>	<div>Scale at A1</div> <div>1:100</div> <div>Date</div> <div>27/10/2023</div> <div>North</div> <div><div></div></div> <div>Drawn</div> <div>AT</div>	<div>Project Address</div> <div>8 Dawn Fraser Ave, Olympic Park</div> <div>Checked</div> <div>JK</div> <div>Status</div> <div>Not for Construction</div>	<div>Drawing</div> <div>Roof Plan</div> <div>Project No.</div> <div>23009</div> <div>Revision</div> <div>A</div> <div>Drawing No.</div> <div>DA 102</div>
--	---	---	---	---	--	--	---